

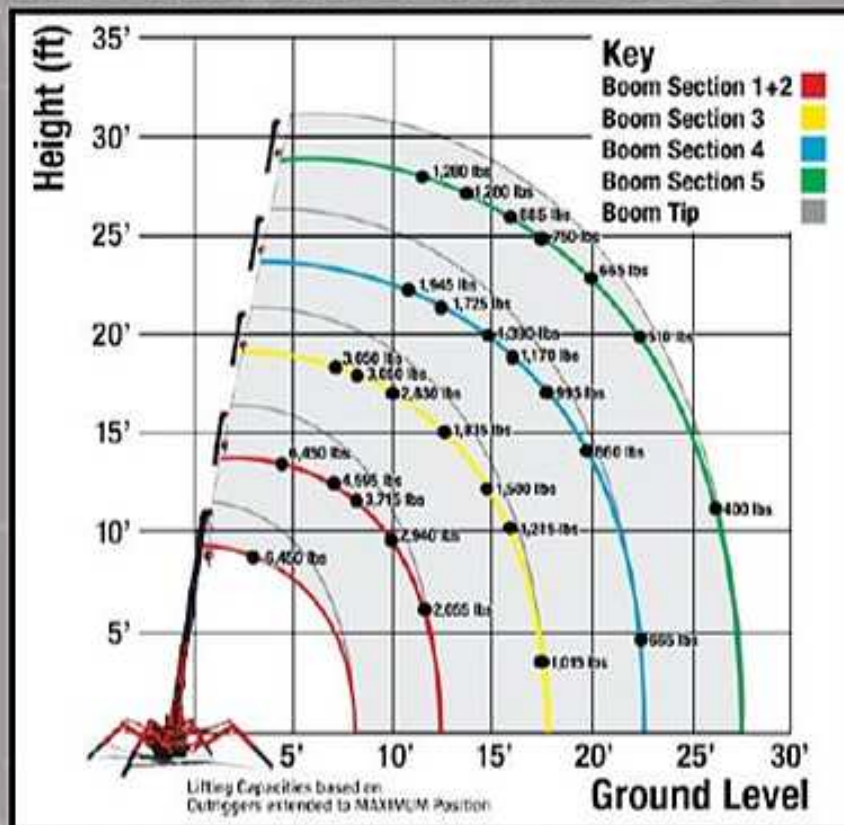
Spyder Crane URW295 Mini-Crawler Crane

LOAD CHART

Lifting capacity varies depending on outrigger configuration and boom length and angle.

BOOM SECTION 1 EXTENDED		BOOM SECTION 1 + 2 EXTENDED								
Working Radius (ft.)	3	4.5	5	6	7	8	10	11	12.58	
Outriggers Maximum (lbs.)	6,450	6,450	5,950	4,950	4,250	3,900	2,810	2,450	2,000	
Outriggers Minimum (lbs.)	4,450	4,450	4,450	3,150	2,250	1,600	1,100	950	600	
BOOM SECTION 1 + 2 + 3 EXTENDED										
Working Radius (ft.)	7	8	9	10	11	12	14	15	17.62	
Outriggers Maximum (lbs.)	3,050	3,050	3,050	2,750	2,450	2,150	1,650	1,450	1,000	
Outriggers Minimum (lbs.)	1,850	1,550	1,250	1,150	1,000	850	600	550	300	
BOOM SECTION 1 + 2 + 3 + 4 EXTENDED										
Working Radius (ft.)	11	12.5	13	15	16	17	18	20	22.61	
Outriggers Maximum (lbs.)	1,950	1,950	1,750	1,250	1,200	1,100	1,000	850	650	
Outriggers Minimum (lbs.)	1,000	900	750	600	510	450	370	290	200	
BOOM SECTION 1 + 2 + 3 + 4 + 5 EXTENDED										
Working Radius (ft.)	12.5	13.5	15	16	18	19	21	23	25	27.59
Outriggers Maximum (lbs.)	1,290	1,290	1,050	920	750	700	590	500	440	350
Outriggers Minimum (lbs.)	650	700	600	520	420	390	300	220	190	120

WORKING RADIUS



Spider Crane URW295 Mini-Crawler Crane

Rated Load for Extension Jib in lbs.

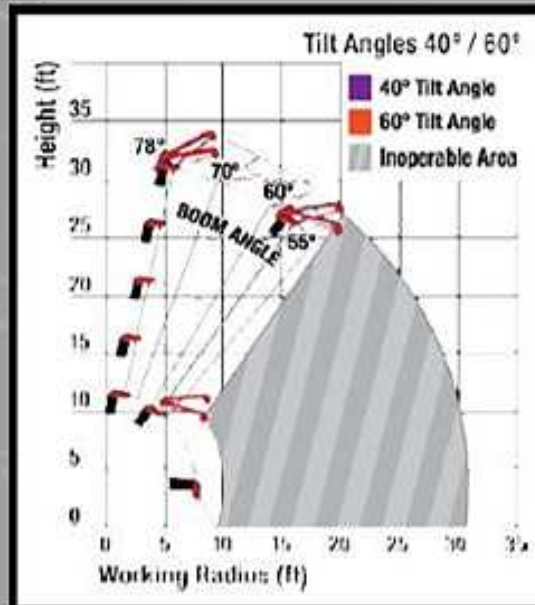
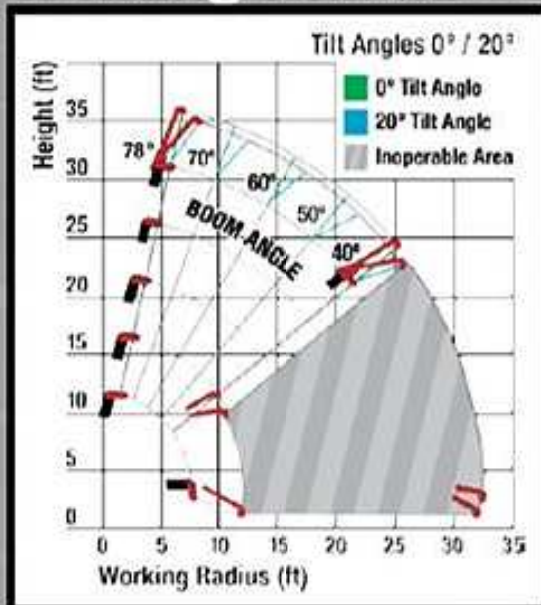
1st TO 4th BOOM SECTIONS

Boom Angle	78°	75°	70°	65°	60°	55°	50°	40°	30°	20°	10°	0°
Tilt Angle	0°	1,580	1,580	1,580	1,140	810	590	590	PROHIBITED AREA OF CRANE OPERATIONS			
	20°	1,580	1,580	1,580	1,140	810	590	590				
	40°	1,580	1,580	1,580	1,140	810						
	60°	1,580	1,580	1,580	1,140	810						

5th BOOM SECTION ONLY

Boom Angle	78°	75°	70°	65°	60°	55°	50°	40°	30°	20°	10°	0°
Tilt Angle	0°	920	920	920	590	480	370	260	PROHIBITED AREA OF CRANE OPERATIONS			
	20°	920	920	920	590	480	370	260				
	40°	920	920	920	590	480						
	60°	920	920	920	590	480						

Working Radius - Jib



Rated Load for Searcher Hook in lbs.

1st TO 4th BOOM SECTIONS

Working Radius (ft.)	12.5	13	15	16	18	20	21	23	26	27.5
Outriggers Maximum (lbs.)	1,560	1,560	1,060	940	740	570	520	410	310	240
Outriggers Minimum (lbs.)	560	460	330	280	190	120	110	PROHIBITED AREA OF CRANE OPERATIONS		

5th BOOM SECTION ONLY

Working Radius (ft.)	12.5	13	15	16	18	20	21	23	26	30	32.5
Outriggers Maximum (lbs.)	1,120	1,010	870	740	670	570	510	410	310	220	130
Outriggers Minimum (lbs.)	560	460	330	280	190	120	110	PROHIBITED AREA OF CRANE OPERATIONS			

1 Part line - 2,100 lbs | 2 Part line - 4,100 lbs | 3 Part line - 5,000 lbs | 4 Part line - 6,450 lbs

Spyder Crane URW295

Mini-Crawler Crane

Specifications

Engine / Motor	Gasoline and/or Propane
Crane Capacity	6,450 lbs @ 4.6 ft
Max Working Radius	1.4 – 28.0 ft
Tip Height	31 ft (37ft with Jib)
Dimensions when Folded (ft.)	2.0 x 4.6 x 9.0 (W x H x L)
Weight	4100 lbs
Telescopic System	Boom Length: 8.3 ft (retracted) to 28.4 ft (extended) Boom Type: 5-Section hydraulically telescoping boom, with hexagonal box construction